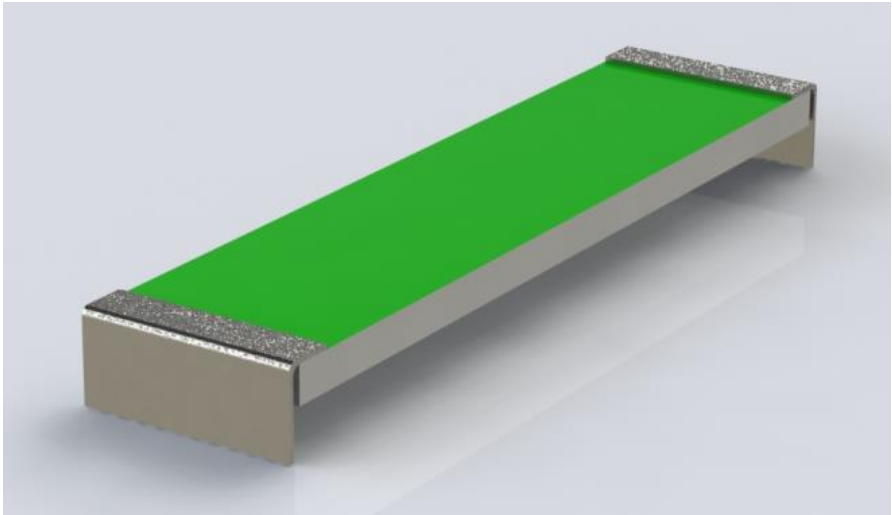


# DIS- Charge Resistor

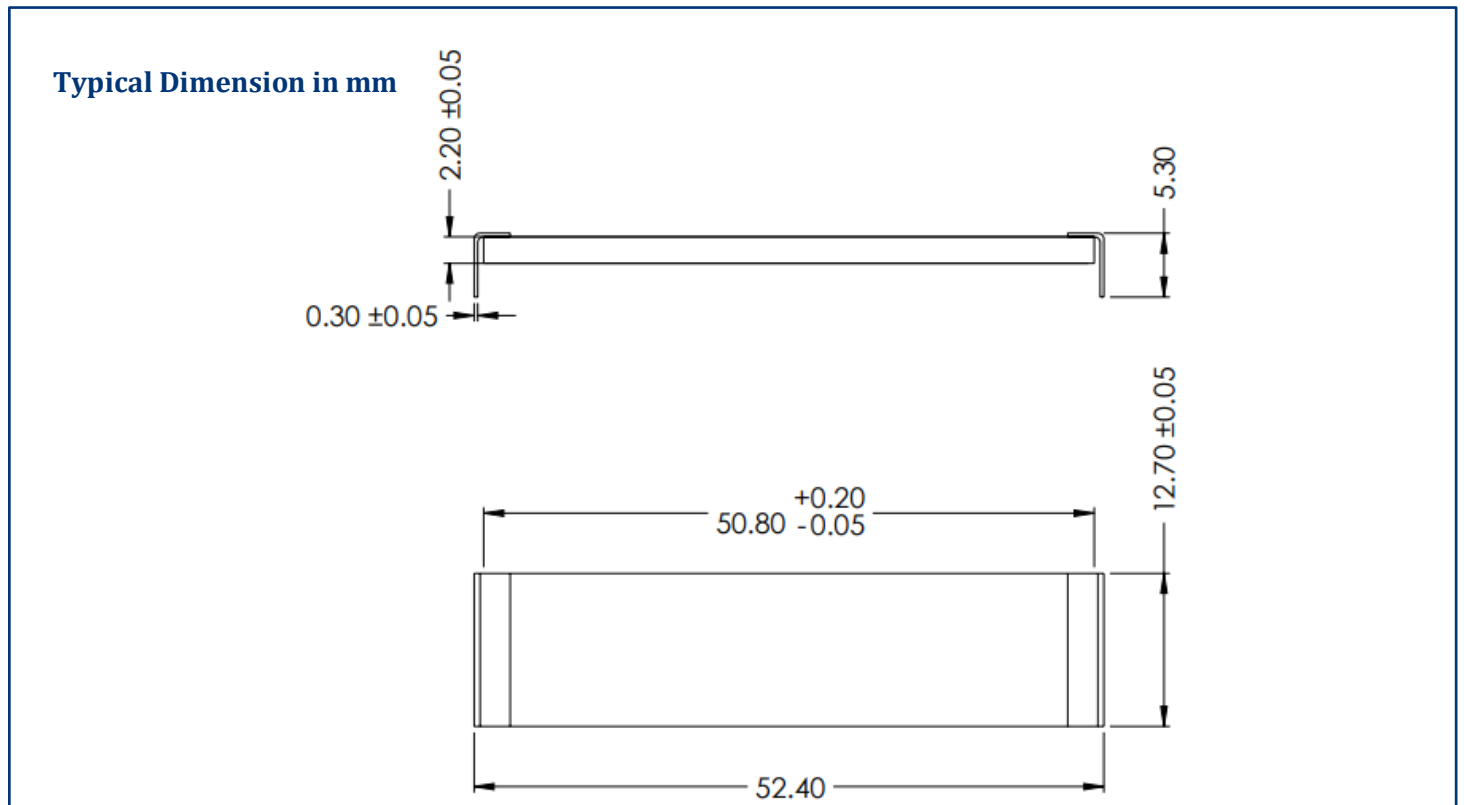


**Benefits:**

- Easy to integrate
- Customizable
- No heat sink requirement
- Easy PCB mount

Feature	Typical Values
Operating voltage	1000 V
Ohmic range	0,1 $\Omega$ - 1M $\Omega$
Constant power rating*	15 W
Weight**	~8 g
Resistance tolerance	$\pm$ 0.5% to $\pm$ 10%
Temperature coefficient	$\pm$ 150ppm/ $^{\circ}$ C
Single pulse***	300 J
Operating temperature range	-55 $^{\circ}$ C to +285 $^{\circ}$ C

\* Depending on ohmic value, features and connection type  
\*\* Depending on variants and features  
\*\*\* Depending on Time constant, Repetition rate



### Disclaimer

The given statements and information herein are recommendations for the use of our products and are based on our experience in combination with applicable technical standards. They are for guidance only and do not represent any assurance of characteristics or warranty commitments for the products or their suitability for specific applications. The suitability of the products for the intended use by the user depends on different boundary conditions and influencing factors and is to be assessed exclusively by the user.

#### DISCLAIMER:

NO WARRANTY OR GUARANTEE, EXPRESS OR IMPLIED, IS MADE WITH RESPECT TO THE PRODUCTS, DESIGNS, DATA, INFORMATION DESCRIBED OR ANY INTELLECTUAL PROPERTY CONTAINED THEREIN. ANY WARRANTY OR GUARANTEE OF MERCHANTABILITY OR FITNESS FOR A PARTICULAR PURPOSE IS ALSO EXCLUDED.

The given statements and information herein reflect the current status at the time of publication. Typing or printing errors cannot be excluded. This publication shall not be reprinted or reproduced in whole or in part in any form or by any means without the express written permission of Miba.