

Innovation in Motion



Miba Bearing Group

High performance bearing products



Miba bearings keep your systems running

Miba is one of the world's leading manufacturers of hydrodynamic bearings. We develop and produce customized hydrodynamic bearings that enable our customers to implement their systems in the best possible way. Our lead-free hydrodynamic bearings offer a reliable way of meeting future requirements in terms of increasing power density, service life, and cost optimization.

To improve the performance of your systems

Maximizing the full potential of your systems is our top priority. By incorporating our bearings, we create new opportunities for our customers across various industries. We provide comprehensive support for our customers and their systems across a wide range of applications.

- Blowers
- Heat pumps
- Presses
- Jet engines
- Turbochargers
- Synchronous condensers
- Test rigs
- Roller drives
- Compressors
- Gearboxes
- Pumps
- Engines
- Electric motors
- Generators
- Expanders
- Turbines
- Mills

Merging material and design competence

Miba technology is unique on the market

Miba Bearing Group combines material and design expertise in hydrodynamic bearing technology. We support our customers with excellent material expertise for highly loaded applications. Customers with applications with very high circumferential speeds rely on our broad design expertise. With our interdisciplinary knowledge, we offer solutions for a wide range of applications and requirements and provide our customers with optimum support.



Miba Bearing Group Products

**TILTING PAD
JOURNAL BEARINGS**



**COMBINED
BEARINGS**



**TILTING PAD
THRUST BEARINGS**

**CENTER FLANGE
BEARINGS**



**FIXED GEOMETRY
BEARINGS**

**PEDESTAL
BEARINGS**



**FLANGE
BEARINGS**

HYDRO BEARINGS



VERTICAL BEARINGS



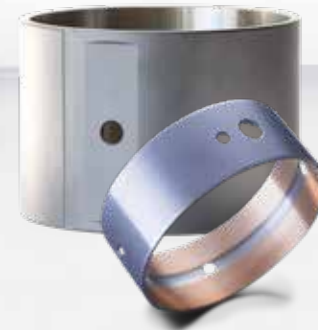
**HALF SHELL JOURNAL
BEARINGS**



**FIXED GEOMETRY
THRUST BEARINGS**



BUSHINGS



**THERMOPLASTIC
SEALS**



VALVE PLATES



**SPARE PARTS
AND REPAIR**



METALLIC SEALS

TILTING PAD JOURNAL BEARINGS

Journal bearings with tilting pads for greater load carrying in heavy-duty rotating machinery.



MATERIALS

- Steel/Babbitt
- Steel/Bronze
- CuCr/Babbitt
- Alternate materials available



APPLICATION EXAMPLES

- Gas & Steam Turbines
- Compressors
- Expanders
- Pumps
- Turbo Gearboxes

TILTING PAD THRUST BEARINGS

Thrust bearings with tilting pads for supporting greater axial loads in heavy-duty rotating machinery.



MATERIALS

- Steel/Babbitt
- Steel/Bronze
- Bronze/Babbitt
- CuCr/Babbitt
- CuCr/AlSn40
- PEEK
- Alternate materials available

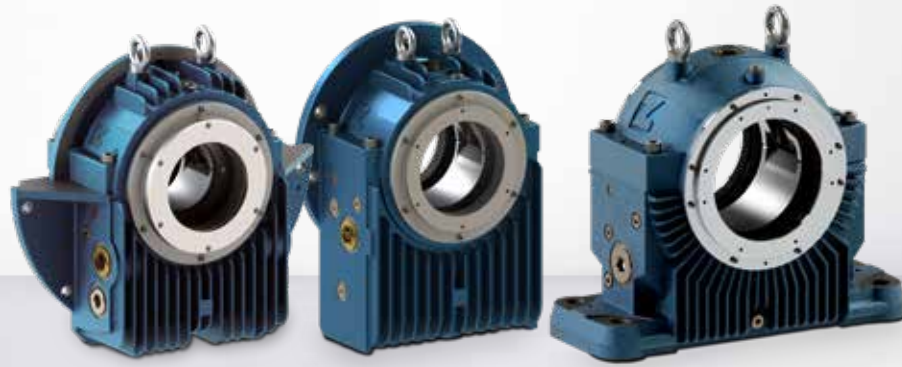


APPLICATION EXAMPLES

- Gas & Steam Turbines
- Compressors
- Expanders
- Pumps
- Turbo Gearboxes

HOUSING BEARINGS

Smart modular system pedestal, end flange, and center flange bearings built to the standards of DIN 31 690, 693 and 694.



MATERIALS

- Nodular Cast Iron
EN-GJS-400-15 (GGG40)
- Upon request Grey Cast Iron
EN-GJL-300 (GG30)
- Upon request EN-GJS-400-18 LT
(GGG40.3)



APPLICATION EXAMPLES

- Generators
- Blowers
- Large electric machinery
- Hydro Turbines
- Synchronous Condensers
- Test Rigs
- Turbogenerators

FIXED GEOMETRY BEARINGS

Sleeve bearings with different bore profiles and thrust face design for optimized performance.

Cylindrical	Lemon-bore	3 Lobe	Offset Halves	4 Lobe



MATERIALS

- Steel/Babbitt
- Steel/Bronze
- Bronze
- CuCr/Babbitt
- Polymer
- Alternate materials available



APPLICATION EXAMPLES

- Blowers
- Gearboxes
- Large electric motors
- Pumps
- Refrigeration Compressors
- Gas & Steam Turbines
- Turbochargers

HYDRO BEARINGS

Miba Hydro Bearings are used in turbines and generators for small (below 30 megawatts), medium-sized (31 and 80 megawatts), and large (above 80 megawatts) hydropower plants.



MATERIALS

- Steel/Babbitt
- Alternate materials available



APPLICATION EXAMPLES

- Generators
- Kaplan Turbine
- Kaplan S Turbine
- Francis Turbine
- Pelton Turbine
- Reversible Turbines
- Bulb Turbine
- Open Pit Turbine

VERTICAL BEARINGS

Vertical housing bearings for demanding applications. In addition to standardized vertical bearings, tailor-made bearing designs according to customer's needs are available.



MATERIALS

- Pads: Steel/Babbitt
- Housing: Nodular Cast Iron
EN-GJS-400-15 GGG40

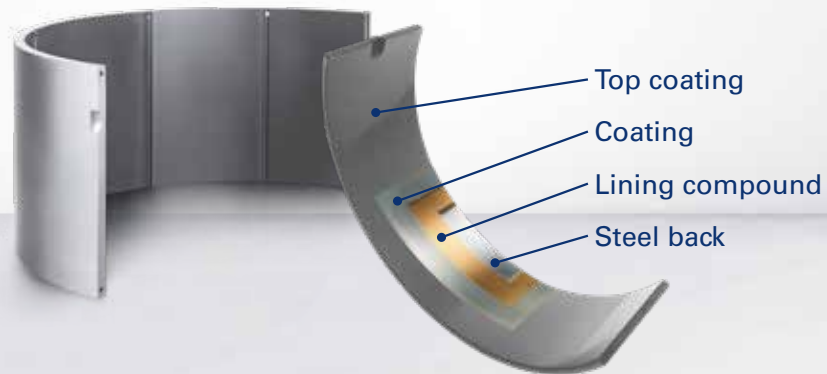


APPLICATION EXAMPLES

- Pumps
- Kaplan Vertical
- Francis Vertical

HALF SHELL JOURNAL BEARINGS

Journal bearings for greater load carrying due to layered structure.



MATERIALS

- Steel back
- Lining compound: Aluminium, Bronze, Babbit
- Coatings: Electroplating, Sputtering, Syntec®



APPLICATION EXAMPLES

- High Pressure Pumps
- Compressors
- Engines
- Heat Pumps
- Roller Drives
- Mills

FIXED GEOMETRY THRUST BEARINGS

Fixed geometry thrust bearings for supporting axial loads for different applications.



MATERIALS

- Bilayer solution: Steel back, Aluminium
- Solid bearing: Aluminium-Tin



APPLICATION EXAMPLES

- Gearboxes
- Engines

BUSHINGS

Bushings for greater load carrying due to layered structure.

The tribologically active material can be applied to either the outer or inner diameter of the bushing.



MATERIALS

- Steel back
- Lining compound:
Aluminium, Bronze, Babbitt
- Coatings:
Electroplating, Sputtering, Synthec®

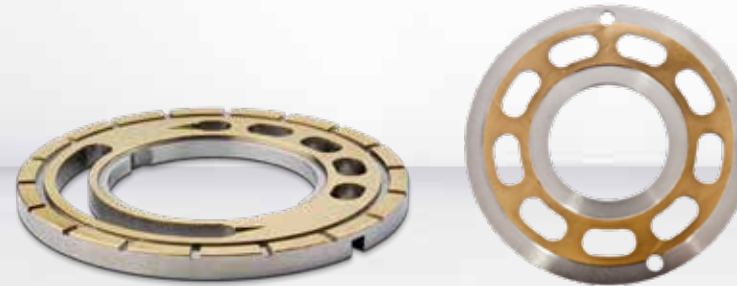


APPLICATION EXAMPLES

- Gearboxes
- Engines
- Heat Pumps
- Presses
- Mills

HYDRAULIC COMPONENTS

The ready-to-install elements stand out due to their high-precision geometry and plane parallelism, achieved through double-sided grinding and lapping, as well as computer-measured analysis. Including: Valve plates, down-hold segments, face plates, port plates, retainer segments and plates and slipper retainers.



MATERIALS

- C22/ CuPb10Sn10
- C10/ CuPb10Sn10
- St37 / CuPb22Sn2
- 100Cr6
- 34CrNiMo6L



APPLICATION EXAMPLES

- Axial Piston Motors
- Axial Piston Pumps
- Bent Axis Motors
- Heavy Duty Pumps
- Hydraulic Motors

SEALS

Our business is servicing our customers' needs for the repair and manufacture of labyrinth seals for turbomachinery, either in-kind or customized to your operation.



MATERIALS

- Aluminium
- Bronze; Bronze/Babbitt
- Felt Metal
- Fluorosint
- Nickel Graphite; Nickel Silver
- Ni-resist
- PEEK
- Steel; Steel/Babbitt
- TORLON/DURATRON
- VESPEL



APPLICATION EXAMPLES

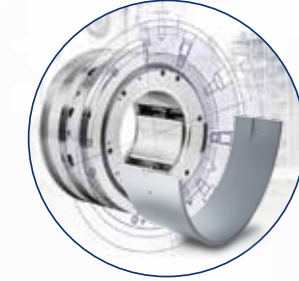
- Gas & Steam Turbines
- Compressors
- Expanders
- Generators
- Turbo Gearboxes

Service Portfolio

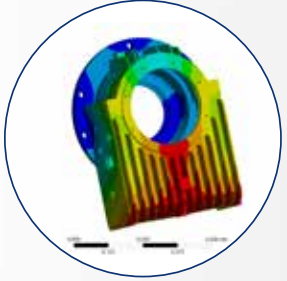
From designing, material choice and exceptional engineering, right through to service and repair – we stand for innovative problem solving skills.



CALCULATION & DESIGN



ANALYSIS & ENGINEERING



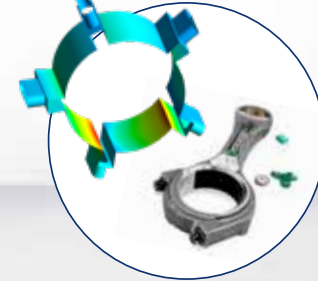
VALIDATION



MANUFACTURING



CONTINUOUS DEVELOPMENT



SERVICE, REPAIR & TRAINING



Miba Bearing Group Sites

You need a partner you can completely rely on. Miba employs a global team of experts, who deal with a large number of customer challenges and a variety of applications and specifications worldwide. This broad wealth of experience is the core of our work.

Miba Industrial Bearings U.S. LLC

Columbus, NE, USA
3300 East 8th Street, Columbus, NE 68601, USA

T +1 262 377-2210
mibusg_sales@miba.com

Miba Industrial Bearings U.S. (Houston) LLC

Bearing repair and service business
Deer Park, TX, USA
1800 W 13th St, Deer Park, TX 77536, USA

T +1 713-943-9100
houston.sales@miba.com

Miba Industrial Bearings U.S. LLC

Grafton, WI, USA
1111 Cedar Creek Rd, Grafton, WI 53024, USA
T +1 262 377-2210
mibusg_sales@miba.com

ABM Advanced Bearing Materials LLC

Greensburg, IN, USA
1515 W., Main Street,
Greensburg, IN 47240, USA

Miba Bearing US LLC

McConnelsville, OH, USA
5037 North State Route 60
McConnelsville, OH 43756, USA

T +1 740 962 4242
bearinggroup@miba.com

Miba Industrial Bearings Germany Osterode GmbH

Osterode, Germany
Rolandsweg 16-20, 37520 Osterode am Harz, Germany
T +49 (0) 5522 31 27-0
mibg_sales@miba.com

Miba Gleitlager Austria GmbH

Laakirchen, Austria
Dr.-Mitterbauer-Straße 3, 4663 Laakirchen, Austria
T +43 7613 2541 0
bearinggroup@miba.com

Miba Bearings Materials GmbH

Aurachkirchen, Austria
Aurachkirchen 45, 4694 Ohlsdorf, Austria

ADMOS Gleitlager GmbH

Berlin, Germany
Wilhelminenhofstrasse 89a, 12459 Berlin, Germany
T + 49 (0) 30 53009-0
info@admos-gleitlager.de

Miba Industrial Bearings Brasil Ltda.

Cataguases, Brazil
Av. Manoel Inácio Peixoto 2147, 36771-000 Cataguases MG, Brazil
T + 55 (32) 3429-5302
vendas.mibcat@miba.com

Miba Precision Components (China) Co.Ltd.

Suzhou, China
No. 15, Xinglong Street, Phase III
215024 Suzhou Industrial Park
Jiangsu Province, P. R. China
T +86 512 6285 0900
bearinggroup@miba.com

**YOUR RELIABILITY IS
OUR PASSION.
OUR INSPIRED PEOPLE
MAKE THE DIFFERENCE.**

Contact us:
bearinggroup@miba.com



www.miba.com/en/product-areas/bearings